

# MONTHLY MEMBERSHIP PROGRESS REPORT

District 3231A1

Results as of: 1/31/2024

GMT:

LOCATION INDIA

GMT CA

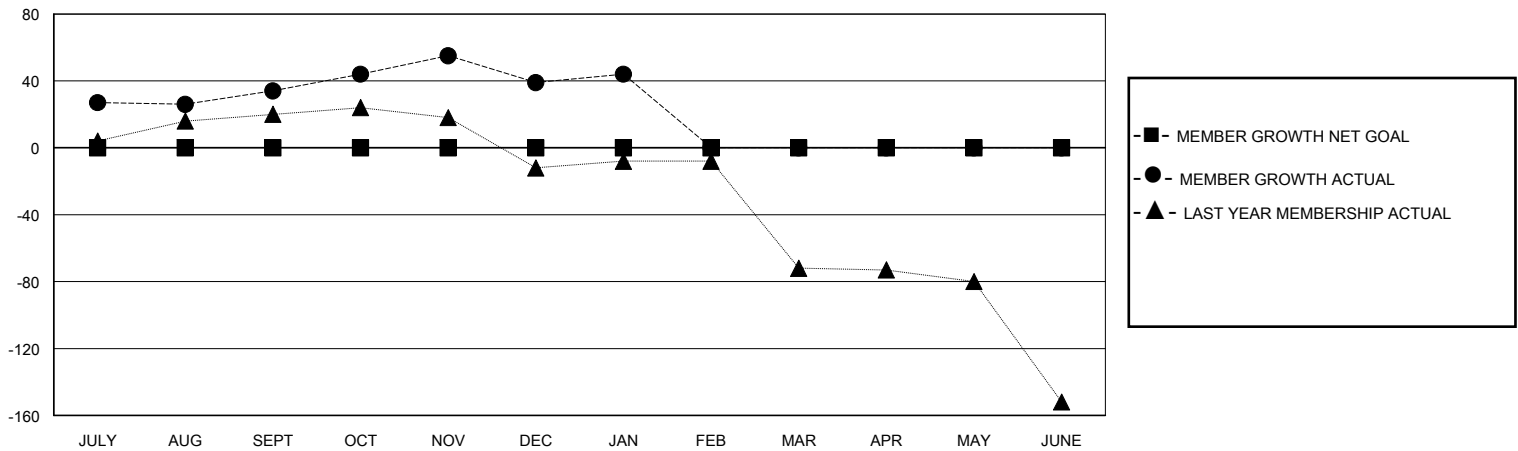
Clubs			
RESULTS FOR 2023-2024			
QUARTER	NEW CLUB GOAL	NEW CLUBS	DROPPED CLUBS
JULY/AUG/SEPT	0	0	1
OCT/NOV/DEC	0	0	0
JAN/FEB/MAR	0	0	0
APR/MAY/JUNE	0	0	0

Members			
RESULTS FOR 2023-2024			
QUARTER	MEMBER GROWTH NET GOAL	MEMBER GROWTH ACTUAL	DROPPED MEMBERS ACTUAL (including transfers)
JULY/AUG/SEPT	0	77	21
OCT/NOV/DEC	0	28	21
JAN/FEB/MAR	0	14	9
APR/MAY/JUNE	0	0	0

GOALS AND ACTUAL NEW CLUBS CUMULATIVE



GOALS AND ACTUAL MEMBERS CUMULATIVE



DROPPED CLUBS: 1	15 CLUBS OF 45 ADDED 1 OR MORE NEW MEMBERS	<b>GENDER DISTRIBUTION</b> MALE 874 (62.52%) FEMALE 524 (37.48%)
<b>DROPPED MEMBERS</b> DECEASED 6 CLUB CANCELLED 0 OTHER 45 TOTAL 51	<a href="#">CLICK HERE FOR CUMULATIVE MEMBERSHIP DATA</a>	TOTAL FAMILY UNIT MEMBERS 495 FAMILY MEMBERS PAYING HALF DUES 264